



## **Ashley Close, London, NW4 1PH**

A stylish and contemporary modern home with innovative design and artistic flair this six-bedroom hall adjoining semi-detached family residence incorporates two reception rooms, an additional study and a modern kitchen diner with fully integrated appliances with a centre island and bi-folding doors leading to a landscaped rear garden backing onto Hendon Golf Club. The house sits in a quiet residential cul-de-sac location and benefits from being in the catchment for a number of popular schools.

A stunning entrance hall with parquet wooden flooring creates an imposing first impression. The ground floor benefits from natural light throughout. The first floor incorporates the primary suite with its own dressing room and an impressive en-suite shower room, a family bathroom and three further bedrooms. The loft has been converted and furnished with two further bedrooms, and an additional shower room. Externally the house boasts off-street parking for two/ three cars.

**£1,475,000**





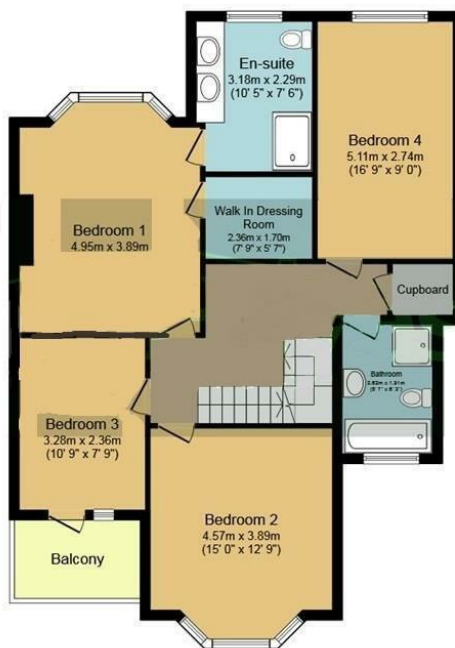








**Ground Floor**



**First Floor**



**Second Floor**

Total floor area 239.2 sq.m. (2,575 sq.ft.) approx

This plan is for illustration purposes only and may not be representative of the property. Plan not to scale.

